

topciment.com

CLASSICMETTAL

CLASSIC METTAL Oxide Brass



Classic Mettal Oxide Brass is a water-based metallic paint with fine brass particles whose application provides a natural brass effect. Always try the product on a small area prior to the application.

Properties

- Applicable on any surface: microcement, concrete, brick, ceramic, wallboard, plaster, glass, paper and metals.
- High adhesion to the substrate. It is recommended to use first our Primacem Plus, adhesion promoter in non-absorbent areas.
- Apply it with trowel, brush, sponge, roller or spray gun.
- Product ready to use, no dilute with water.

Amount needed

Consumption will depend on the surface to be coated and the application method. If applied with a trowel it would be as follow: 0.15 L/m²

Application

Depending on the desired effect, apply Classic Mettal Oxide Brass by using one of these two techniques:

a. Natural Brass effect:

Apply a coat of Classic Mettal Oxide Brass and, once dry, polish lightly with a 400 sandpaper until the desired brightness is obtained. Finally wipe with a damp cloth in order to remove loose particles and proceed to seal.

b. Patina effect:

Apply two coats of Classic Mettal Oxide Brass, with 4 hours of separation between them. After 24 hours of the second coat, sanding with grain 120 to expose the bronze particles, and thus facilitate oxidation. For a faster oxidation do not remove the dust. Then apply one coat of Mettal Activator homogeneously over the entire surface to be treated, do not over-load to prevent pick-up, leave for 2-3 hours and proceed to sealing. In case you want to accentuate the oxide effect, and after 2-3 hour, give a second coat with Mettal Activator in the desired areas, leaving 2-3 hours before sealing.

Note: Do not apply Classic Metall Oxide Brass in outdoors in case of rain forecast.

c. Sealing:

Apply one coat of presealer in order to protect the product and stop the oxidization. After 4 hours, sealing with two coats of Topsealer WT, with an interval of 12 hours between coats.

Special precautions

If the product comes into contact with eyes, wash with plenty of water for 15 minutes. In case of contact with skin, wash with soap and water. Do not ingest. If swallowed, do not induce vomiting and seek medical assistance immediately.

It is recommended to comply with the following measures:

- Good ventilation.
- Safety glasses.
- Rubber gloves.

Empty containers must be disposed of in accordance with current local regulations. To prevent the product from drying or thickening, close the lid after each use. This product is not toxic, dangerous or flammable under normal conditions of handling. It does not contain any harmful substances that under current regulations call for any additional measures in terms of its labelling. Keep out of the reach of children.

Packaging

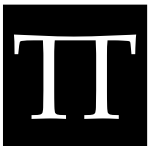
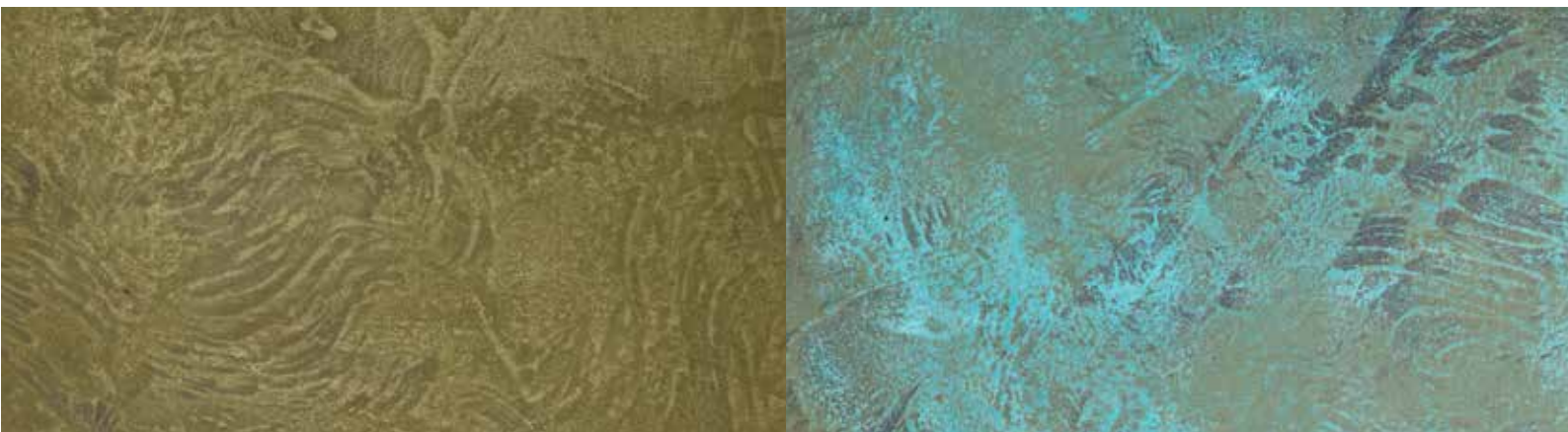
It is available in bottles of 1 litre.

Cleaning of tools

Tools should be cleaned with water and soap immediately after use.

Storage conditions

The product should be stored in its closed original packaging, protected from weather conditions at temperatures between 10°C and 30°C in a dry and well ventilated place, away from direct heat and sunlight. Shelf life is 1 year from the date of production, if stored in well-preserved conditions.



topciment.com

The product should not be used for purposes other than those specified without first having instructions in writing. It is always the user's responsibility to take suitable measures in order to comply with the requirements established in local legislation. Product safety sheets are available for professionals. This technical data sheet will be valid until a new edition appears.

Last updated: July 2020